



YORKLANDS GREEN HUB
Opening green doors to the future.

Welcome to the Yorklands community update!

Yorklands Community Update: May 30, 2025

It's been a busy Spring here at Yorklands Green Hub! As we head into June, here's what we have going on:

🪨 Stone Wall Walk - June 14 - Guided walk of the Yorklands site focused on the historic stone wall

📖 ORHCD Plan Call to Action - The deadline to have your say is extended to June 8th.

👏 Call for Volunteers - We have a bunch of exciting positions open, make sure to check them out!

🌿 Call for Noticing Nature Facilitator - A great opportunity for folks with a background in outdoor education, community arts, or youth programming!

🤞 Fingers crossed we have some sunny spring days ahead!

The Yorklands Team

ALONG A STONE WALL

a guided walk of the Yorklands site
Presented by Greg Stojanovski

SATURDAY

June 14, 2025

1:00 - 2:30 PM

785 York Road, Guelph
(#4 bus drops you right
at our front gates)

Rain Date: Sunday June 15



YORKLANDS GREEN HUB
Opening green doors to the future.

Ontario
Trillium
Foundation



Fondation
Trillium
de l'Ontario

An agency of the Government of Ontario
Un organisme du gouvernement de l'Ontario

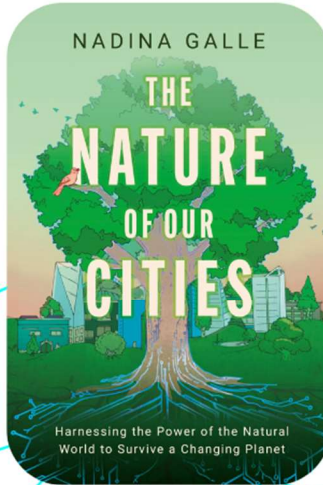
👤 Join presenter Greg Stojanovski for a walk "Along a Stone Wall" to learn more about one of the most beautiful and storied features of the Yorklands site!

Register now: <https://alongstonewall.eventbrite.ca>



SUMMER BOOK CLUB

G U E L P H G R E E N R E A D S



💎 Thank You for Joining Us! 💎

A heartfelt thank you to everyone who attended the launch of #GuelphGreenReads and helped kick off our city-wide book club with such enthusiasm! We were honoured to feature Dr. Nadina Galle and her ground-breaking work *The Nature of Our Cities*, which is already sparking important conversations about how technology and ecology can work hand in hand. Your presence, questions, and curiosity made the event a true celebration of community, learning, and urban nature.

♥ Special thanks to Dr. Galle for sharing her insights and inspiring us to rethink the way we live with nature in our cities.

📰 Don't forget to check out #GuelphGreenReads in the news!

[Guelph Today Article](#)

[Guelph Mercury Article](#)

#GuelphGreenReads Partner Organizations

- [The Bookshelf](#)
- [The University of Guelph Arboretum](#)
- [Nature Guelph](#)
- [Pollination Guelph](#)
- [Guelph Urban Forest Friends](#)
- [Guelph Public Library](#)

Get your copy of *The Nature of Our*

Cities at https://www.bookshelf.ca/item/UhelvOrckPmj-aH_rgQmBg

OR <https://catalog.guelphpl.ca/polaris/search/title.aspx?ctx=1.1033.0.0.5&pos=1&cn=1127001>



June is National Indigenous History Month! As always we're using this

opportunity to reflect on our responsibility to the land upon which we live and work, and to the Indigenous Peoples of this land.

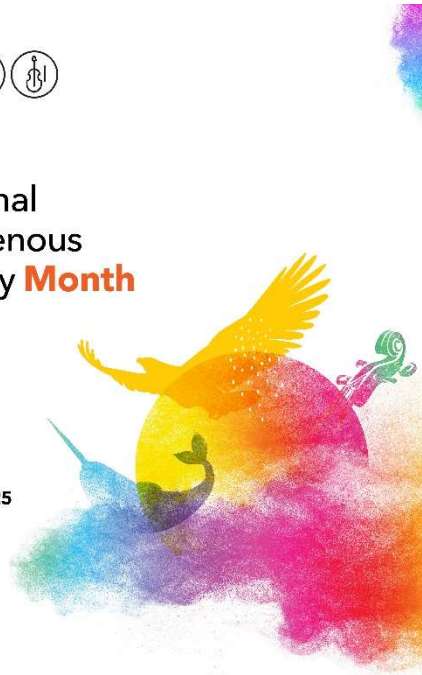
At Yorklands Green Hub, our Board Members take mandatory Cultural Humility Training to learn about this history of colonization on Turtle Island and how they themselves, and we as an organization are positioned within the colonial structure.

There will be many opportunities to learn and engage throughout the month - we'll make every effort to share them with our members as they come up!



National
Indigenous
History **Month**

#NIHM2025





We've decided National Volunteer Week is too short to celebrate all the wonderful people that make our work possible. Every week we'll be introducing you to some exceptional YGH volunteers in each bi-weekly e-blast, beginning with our new Board Members! This week we're pleased to introduce you to our new Board Member, Catherine!

Catherine Killen has had a lifelong commitment to protecting wilderness and urban green spaces alike. She is a PMP certified project manager currently working for an agency that supports the not for profit sector. She is happy to help YGH to carry out its mandate.



CALL FOR VOLUNTEERS

Join our team and make a difference in
our community!

🌱 We're Looking for Volunteers!

Want to get more involved with Yorklands Green Hub? We're currently seeking volunteers to support our numerous events, as well as help behind the scenes as our Events Coordinator or on our Environmental Education Advisory Committee.

Whether you love connecting with the community or organizing communications or events, we'd love to hear from you!

Interested?

Email us at info@yorklandsgreenhub.ca to learn more or apply here:

<https://yorklandsgreenhub.ca/volunteer-form/>.



🌱 Join Our Team: Lead Art & Nature Sessions for Youth 🌱

Yorklands Green Hub is now accepting applications for Noticing Nature facilitators!

We're looking for creative and experienced individuals to lead this unique 2-hour outdoor program that inspires children and youth to connect with nature through guided ecological discovery and artistic expression.

Sessions take place at the beautiful Yorklands site and blend observation, creativity, and environmental awareness.

If you have a background in outdoor education, community arts, or youth engagement—and a passion for nurturing the next generation of nature stewards—

we encourage you to apply. Learn more and fill out the facilitator application form on our website.

<https://yorklandsgreenhub.ca/noticing-nature-contact-form/>



Announcement: The deadline for the ORHCD Plan consultation period has been extended to June 8th!

Please register at the City's "Have Your Say" page and comment on the Conservation Plan for the Heritage Conservation District.

<https://haveyoursay.guelph.ca/.../reformatory-district>

You may have already written to Council, but this feedback will go to staff and then back to Council again. We all need to be aware: this Plan will take precedence over our own Official Plan. Among the issues:

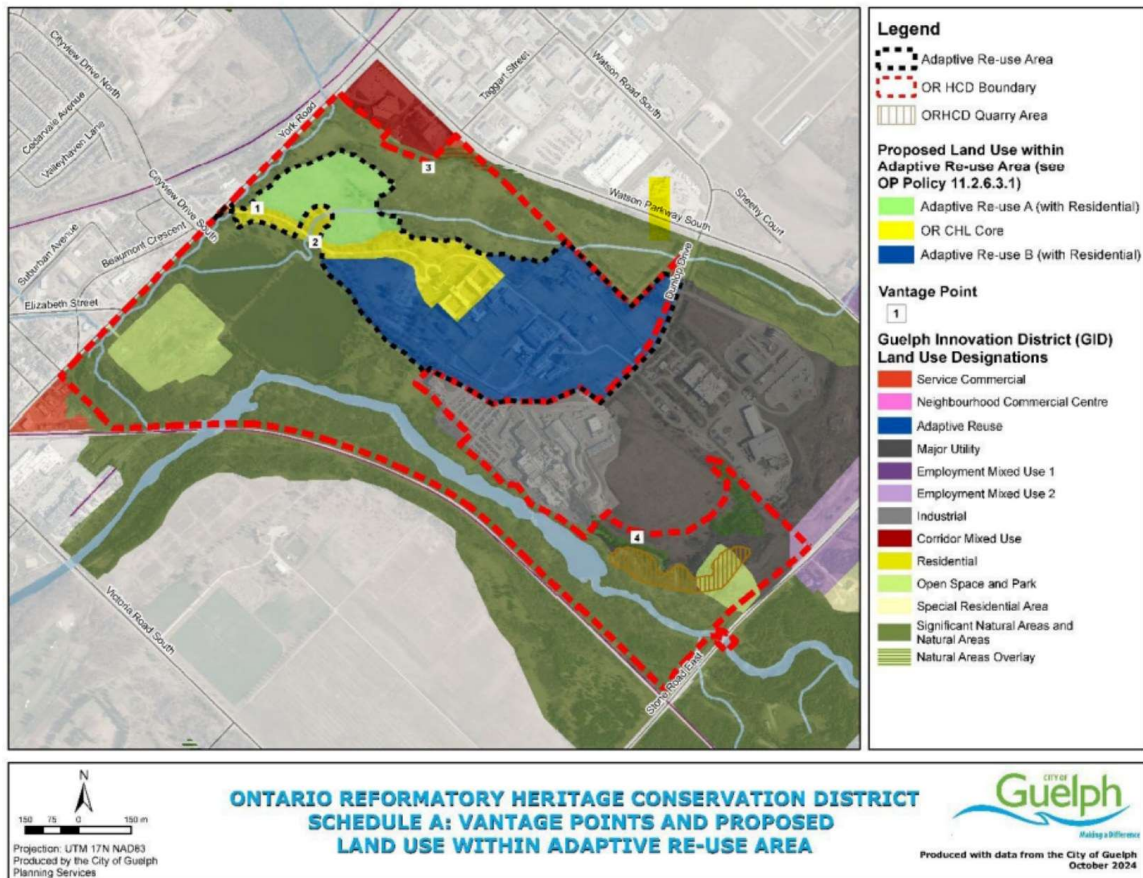
- permissive language in guidelines rather than strong language in policies to protect the area.

- introduction of Residential as a land use, when it isn't contemplated in Guelph's Official Plan

See the map below where the "Conservation Plan" proposes amending the Definition of Adaptive Reuse Zoning, to permit Residential from Dunlop Drive to York Road.

If we don't speak up, the city can say they had very few comments on the proposal.

Figure 9: Plate 5: Proposed Land Use with Adaptive Re-use Area



BUY A MEMBER-SHIP TODAY!

To be clear it's not an actual *ship*...it's better!
Our members enjoy exclusive rewards and benefits! Sail towards a greener future with us by becoming a member today!

VISIT:
[HTTPS://YORKLANDSGREENHUB.CA/
BECOME-MEMBER/](https://yorklandsgreenhub.ca/become-member/)



By now you've heard about the launch of our new membership model, designed to offer enhanced benefits and flexibility to our valued members!

As we continue our mission to promote environmental sustainability and community engagement, we believe that this new model will better serve the diverse needs and interests of our members. As current memberships expire, we will be gradually transitioning all members to the new membership model. Rest assured, we will

provide ample communication and support throughout this process to ensure a seamless transition for all members.

We invite you to explore our new membership tiers and consider renewing your membership at your preferred level. Your continued support enables us to drive positive change in our community and beyond.

For more information about the new membership model or to renew your membership, contact Kim Wakeford at yghmembershipsecretary@yorklandsgreenhub.ca

A special thank you to our sponsors at the Guelph Museums and The Neighbourhood Group for supporting our membership programs!



[Click here to visit our website](#)

[Donate](#)

[Become a Member](#)



[Share](#)



[Follow](#)

Copyright © 2025 Yorklands Green Hub, All rights reserved.

Our mailing address is:

42 Carden Street, Guelph

Ontario, Canada

N1H 3A2

Want to change how you receive these emails?

You can [unsubscribe](#) or [manage preference](#).