

Foodsters Learning Centre





The Ten Tall Trees Program (TTT) was started in 2018 as a pilot program with support from the Upper Grand District School Board. It was then delivered as an indoor/outdoor program to grades 5&6.

With the Covid-19 restrictions in 2019 and 2020 it was only outdoors at the Yorklands with the public. In 2021 it has been incorporated into the Foodster outdoor program for students and the public.

This new interactive outdoor program is about growing food for all species. It runs for 8 weeks in the spring, summer and fall. We have incorporated our Polli-patch and Ten Tall Trees programs into this new program geared for senior elementary school and the public.



Learning to identify
Ten Tall Trees
increases interest in
our surroundings and
tree effects on water,
air and the food webs
of all species.
Stewardship starts
with these
connections.



Chosen seeds for pollinators and people were planted indoors under lights. Then the plants were moved outdoors in May. Raised beds were constructed with help from Transition Guelph and rain barrels were installed beside the beds.



Summer volunteer students transplanted, harvested, watered and weeded as they worked with the plants, watching for pollinators and drought.







Polli-Patches

a program by
Yorklands Green Hub



Learn more at:
yorklandsgreenhub.ca



The fall program with Grade 7 students included keeping journals as they learned to connect the plant and insect world to the entire food system for all species.



Oaks top the list of specific keystone trees that should be plentiful in our urban settings.

Students checked the streets around their homes to find their closest oak tree. Many areas are missing this critical tree.



Top Trees besides Oaks which supply food for 557 different species:
 Willow- 455, Birch-411, Poplar-367, Apple- 308, Maple- 297,
 Pine- 201, Walnut 129, etc.

<i>Quercus</i> (557)	<i>Thuja</i> (50)	<i>Euonymus</i> (11)	<i>Sideroxylon</i> (4)	<i>Dirca</i> (1)
<i>Prunus</i> (456)	<i>Diospyros</i> (46)	<i>Frangula</i> (11)	<i>Cedrus</i> (3)	<i>Leiophyllum</i> (1)
<i>Salix</i> (455)	<i>Gleditsia</i> (46)	<i>Lindera</i> (11)	<i>Cissus</i> (3)	<i>Menispermum</i> (1)
<i>Betula</i> (411)	<i>Ceanothus</i> (45)	<i>Lyonia</i> (11)	<i>Cotoneaster</i> (3)	<i>Nemophila</i> (1)
<i>Populus</i> (367)	<i>Platanus</i> (45)	<i>Caragana</i> (10)	<i>Hedera</i> (3)	<i>Osmanthus</i> (1)
<i>Malus</i> (308)	<i>Gaylussacia</i> (44)	<i>Clethra</i> (10)	<i>Lagerstroemia</i> (3)	<i>Stewartia</i> (1)
<i>Acer</i> (297)	<i>Celtis</i> (43)	<i>Rhamnus</i> (10)	<i>Myrtus</i> (3)	<i>Metasequoia</i> (0)
<i>Vaccinium</i> (294)	<i>Juniperus</i> (42)	<i>Pyracantha</i> (9)	<i>Tamarix</i> (3)	<i>Vitex</i> (0)
<i>Alnus</i> (255)	<i>Sambucus</i> (42)	<i>Morus</i> (9)	<i>Deutzia</i> (2)	<i>Ceratonia</i> (0)
<i>Carya</i> (235)	<i>Physocarpus</i> (41)	<i>Elaeagnus</i> (9)	<i>Lavandula</i> (2)	<i>Cercidiphyllum</i> (0)
<i>Ulmus</i> (215)	<i>Syringa</i> (40)	<i>Chaenomeles</i> (8)	<i>Lycium</i> (2)	<i>Exochorda</i> (0)
<i>Pinus</i> (201)	<i>Ilex</i> (39)	<i>Cytisus</i> (8)	<i>Melia</i> (2)	<i>Firmiana</i> (0)
<i>Crataegus</i> (168)	<i>Sassafras</i> (38)	<i>Ficus</i> (8)	<i>Paulownia</i> (2)	<i>Grewia</i> (0)
<i>Rubus</i> (163)	<i>Lonicera</i> (37)	<i>Catalpa</i> (8)	<i>Phoenix</i> (2)	<i>Kalopanax</i> (0)
<i>Picea</i> (150)	<i>Liquidambar</i> (35)	<i>Chamaecyparis</i> (8)	<i>Sophora</i> (2)	<i>Kerria</i> (0)
<i>Fraxinus</i> (149)	<i>Kalmia</i> (33)	<i>Chionanthus</i> (8)	<i>Sorbaria</i> (2)	<i>Kolkwitzia</i> (0)
<i>Tilia</i> (149)	<i>Aesculus</i> (33)	<i>Maclura</i> (8)	<i>Weigela</i> (2)	<i>Nandina</i> (0)
<i>Pyrus</i> (138)	<i>Parthenocissus</i> (32)	<i>Taxus</i> (8)	<i>Calycanthus</i> (2)	<i>Phellodendron</i> (0)
<i>Rosa</i> (135)	<i>Photinia</i> (29)	<i>Cupressus</i> (7)	<i>Gaultheria</i> (2)	<i>Pseudosasa</i> (0)
<i>Corylus</i> (131)	<i>Nyssa</i> (26)	<i>Andromeda</i> (7)	<i>Litsea</i> (2)	<i>Rhodotypos</i> (0)
<i>Juglans</i> (129)	<i>Symphoricarpos</i> (25)	<i>Campsis</i> (7)	<i>Menziesia</i> (2)	<i>Stephanandra</i> (0)
<i>Castanea</i> (127)	<i>Cydonia</i> (24)	<i>Celastrus</i> (7)	<i>Pieris</i> (2)	<i>Styphnolobium</i> (0)
<i>Fagus</i> (127)	<i>Ligustrum</i> (24)	<i>Halesia</i> (7)	<i>Staphylea</i> (2)	<i>Tetradium</i> (0)
<i>Amelanchier</i> (124)	<i>Shepherdia</i> (22)	<i>Ledum</i> (7)	<i>Abelia</i> (1)	<i>Toona</i> (0)
<i>Larix</i> (121)	<i>Liriodendron</i> (21)	<i>Ailanthus</i> (6)	<i>Bambusa</i> (1)	<i>Zeakova</i> (0)
<i>Cornus</i> (118)	<i>Magnolia</i> (21)	<i>Clematis</i> (6)	<i>Broussonetia</i> (1)	<i>Adlumia</i> (0)
<i>Abies</i> (117)	<i>Cephalanthus</i> (19)	<i>Ptelea</i> (6)	<i>Buddleja</i> (1)	<i>Arceuthobium</i> (0)
<i>Myrica</i> (108)	<i>Cercis</i> (19)	<i>Zanthoxylum</i> (6)	<i>Buxus</i> (1)	<i>Berchemia</i> (0)
<i>Viburnum</i> (104)	<i>Smilax</i> (19)	<i>Albizia</i> (5)	<i>Calluna</i> (1)	<i>Borrichia</i> (0)
<i>Ribes</i> (99)	<i>Wisteria</i> (19)	<i>Ginkgo</i> (5)	<i>Camellia</i> (1)	<i>Cladrastis</i> (0)
<i>Ostrya</i> (94)	<i>Persea</i> (18)	<i>Decodon</i> (5)	<i>Clerodendrum</i> (1)	<i>Empetrum</i> (0)
<i>Tsuga</i> (92)	<i>Arctostaphylos</i> (17)	<i>Diervilla</i> (5)	<i>Colutea</i> (1)	<i>Eubotrys</i> (0)
<i>Spiraea</i> (89)	<i>Ricinus</i> (16)	<i>Gymnocladus</i> (5)	<i>Forsythia</i> (1)	<i>Itea</i> (0)
<i>Vitis</i> (79)	<i>Taxodium</i> (16)	<i>Hydrangea</i> (5)	<i>Koeleruteria</i> (1)	<i>Loiseleuria</i> (0)
<i>Pseudotsuga</i> (76)	<i>Chamaedaphne</i> (15)	<i>Cotinus</i> (4)	<i>Laburnum</i> (1)	<i>Nestronia</i> (0)
<i>Robinia</i> (72)	<i>Toxicodendron</i> (15)	<i>Eremochloa</i> (4)	<i>Phyllostachys</i> (1)	<i>Styrax</i> (0)
<i>Carpinus</i> (68)	<i>Oxydendrum</i> (14)	<i>Genista</i> (4)	<i>Poncirus</i> (1)	<i>Xanthorhiza</i> (0)
<i>Sorbus</i> (68)	<i>Ampelopsis</i> (13)	<i>Indigofera</i> (4)	<i>Pterostyrax</i> (1)	<i>Zenobia</i> (0)
<i>Comptonia</i> (64)	<i>Arbutus</i> (12)	<i>Pueraria</i> (4)	<i>Sapium</i> (1)	
<i>Hamamelis</i> (63)	<i>Asimina</i> (12)	<i>Leucothoe</i> (4)	<i>Thamnocalamus</i> (1)	
<i>Rhus</i> (58)	<i>Berberis</i> (12)	<i>Philadelphus</i> (4)	<i>Vincetoxicum</i> (1)	
<i>Rhododendron</i> (51)	<i>Acacia</i> (11)	<i>Phoradendron</i> (4)	<i>Callicarpa</i> (1)	

“Insects are the little things that run the world” – E. O. Wilson
The caterpillars they produce are critical food for our birds and pollinators.

Carolina chickadees,
for example, rear
their young almost
exclusively on
caterpillars.



One pair of chickadees must have thousands of caterpillars for one clutch of nestlings.







30 pots of burr
oak acorns were
planted Sept 9th
by grade 7
students
with volunteer
help







Last harvest went to classroom teacher, Erin Clutton, with many thanks for persistence and enthusiasm in support of the Foodster Learning Centre.



Visit to the
Huron St
Community
Garden nearby
for more top
trees in the
area

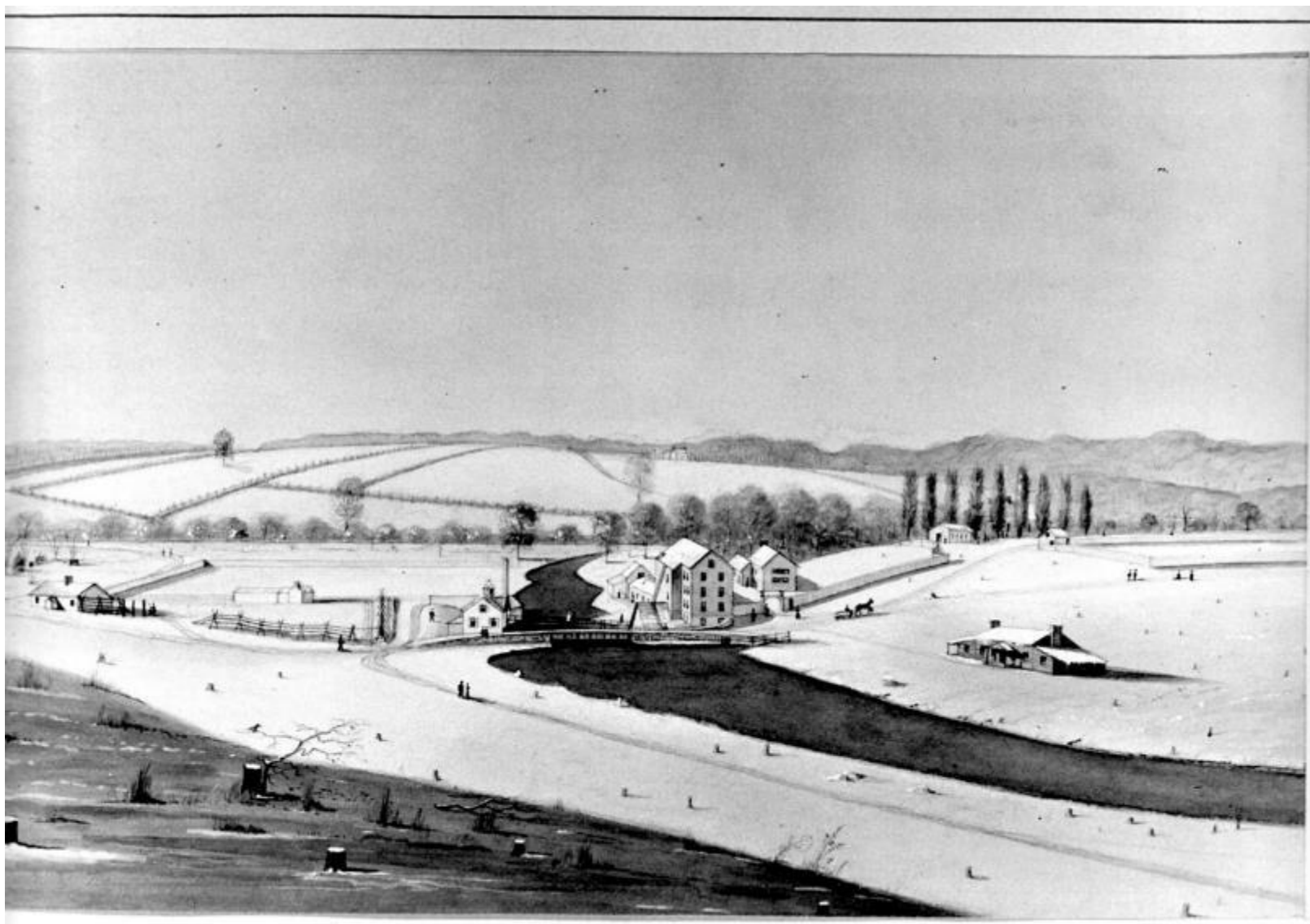




Fall asters were among the great diversity of keystone plants for pollinators found when the Foodsters visited the Huron St Community Garden with their journals.





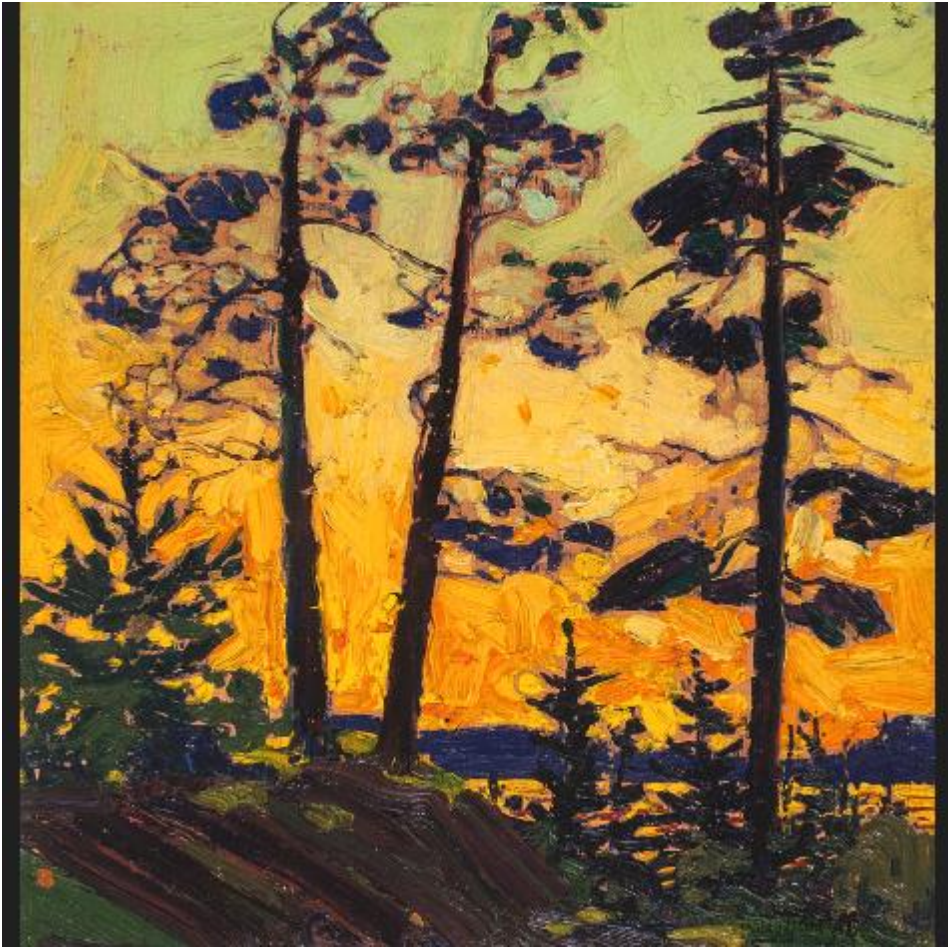


ALLANS MILL, GUELPH, ONTARIO 1845.





100 years ago, great Canadian artists showed us their passion for trees.



















Emily Carr- friend of the
Group of Seven painting
in BC at the time

**“Scorned by man, beloved
by the sky”** is the title of
this painting



The **Tree of Life** is a worldwide concept of artists. It includes the whole tree, the soil and underground network and often, the inhabitants of the tree.

Here are a few artists who can inspire us to see the foodweb connections.

Birds in Cherry
Tree

by Norval
Morrisseau



Tree of Life

by
Marcia Baldwin



Tree of Life

by
Blake
Debassige



Where are your
favourite trees?

These cedars and spruce
trees are at
the Yorklands



Find your favourite tree in
our city.
Watch it through the
seasons.
Create a Tree of Life
drawing or painting from it.

This is the Heritage Silver
Maple at the Yorklands.





With gratitude to Pollination Guelph, Transition Guelph, teachers, students, volunteers, Compost Queen and Huron St Community Garden who made this program a success. With funding and support also from the Walkathon 2021, we have had a successful pilot program that can go forward.

This program was inspired by the work of Doug Tallamy, entomologist, ecologist and conservationist and Pollination Guelph.

